

JJTOOLS®

Provide the Professional Storage Solution for you
SINCE 1995



Mod. AP04-01

Mod. AP12-01

Mod. AP18-01

Mod. AP12-02

Mod. AT-09A

9PC POWER SCREWDRIVER SET



Mod. AT-14C

14PC POWER DRILL SET



Mod. AT-47E

47PC POWER DRILL SET



Mod. AT-43A

43PC POWER SCREWDRIVER SET



Mod. AT-47C

47PC POWER DRILL SET

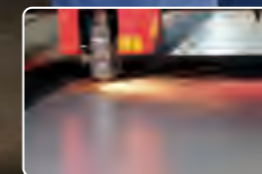


Mod. AT-55E

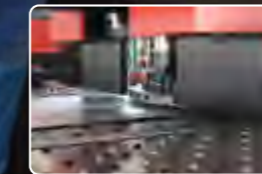
55PC POWER DRILL SET



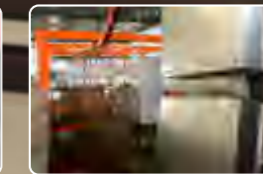
Automatic Punch Line



Laser Cutting



CNC Forming Machine



Spraying Line



High-quality Roller Cabinets



NINGBO JIE JIE TOOLS CO.,LTD.

Add: No.118 Zhuangshi Road,315212 Ningbo,China

Tel:0086 574 86321199

Fax:0086 574 86321666

www.jjtools.com

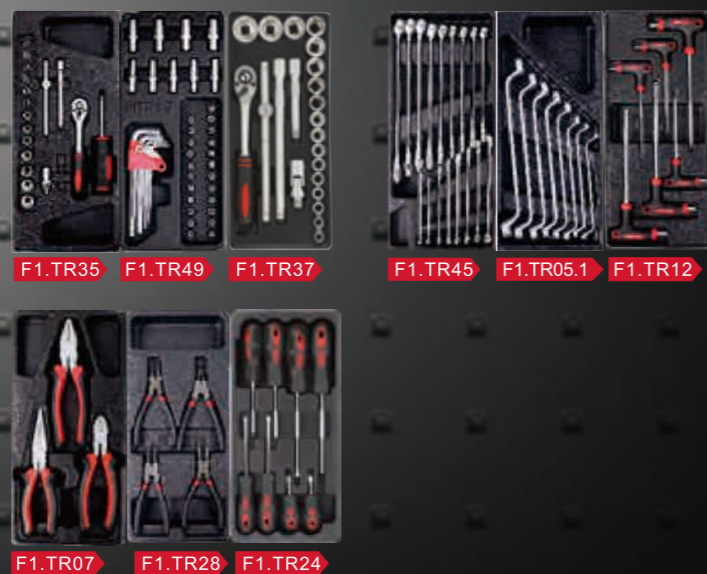
www.chinamobilecabinet.com

E-mail:sales@jjtools.com





BASIC LINE 129PCS TOOLS



PRO LINE 129PCS TOOLS



Economic

M1RP7B 7-Drawer Roller Cabinet

- High Intensity Worktop
- Central locking system provides security, all drawers on telescopic full extension ball-bearing slides open and close easier as load increases.
- Heavy duty wheels for easy crossing of obstacles.
- Aluminum drawer pulls can be chosen
- Cabinet dimensions: 766*465*958MM
- Drawer sizes:
Small Drawer:533*391*58MM
Intermediate Drawer:533*391*128MM
Large Drawer:533*391*195
- Wheel Size: Φ 100mm
2 Fixed, 2 Castor



BASIC LINE 356PCS TOOLS



PRO LINE 150PCS TOOLS



Professional

F1RP7B 7-Drawer Roller Cabinet

- An extra large, heavy duty work station ideal for professional and industrial use.
- High quality material and technology ensures a higher performance under each working condition.
- An extension space provided by an lifting and falling back wall, an extra lockable shutter cabinet is available All parts meet industry standards
- Cabinet dimensions: 766*465*958MM
- Drawer Sizes:
Small drawer:533*391*58MM
Intermediate drawer:533*391*128MM
Large drawer:533*391*195MM
- Wheel size: φ 125MM
2 Fixed, 2 Castor (one with brake)



BASIC LINE 121PCS TOOLS



BASIC LINE 149PCS TOOLS



Economic

F0RP6 6-Drawer Roller Cabinet

- Full double wall construction features.
- Economic size to meet the demand of limited space use.
- Integrated ergonomic handle within the worktop and anti-shock plastic worktop.
- Drawers on telescopic full-extension ball-bearing slides open and close easier as load increases.
- Side perforated panels to hang tools and accessories.
- Centralized security locking.
- Self-locking drawer release preventing the drawers from sliding open accidentally.
- 4 wheels 125mm diameter: 2 fixed and 2 castors (one with brake).
- Cabinet dimensions: 712*435*902MM
- Drawer Sizes: Small drawer: 497*370*56MM Intermediate drawer: 497*370*126MM Large drawer: 497*370*195MM
- Wheel size: Φ 100MM 2 Fixed, 2 Castor (one with brake)

PRO LINE 131PCS TOOLS

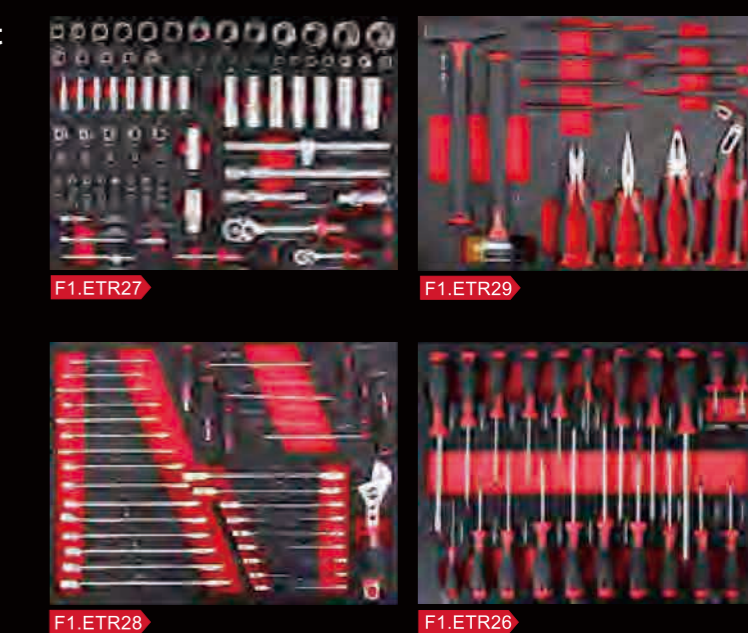


Professional

F5SRP7B 7-Drawer Roller Cabinet

- Full double wall construction features, two full layers of heavy duty steel to provides strength and durability.
- Integrated ergonomic handle within the worktop and anti-shock plastic worktop.
- Drawers on telescopic full-extension ball-bearing slides open and close easier as load increases. Side perforated panels to hang tools and accessories.
- Centralized security locking
- Self-locking drawer release system preventing the drawer from sliding open accidentally.
- Cabinet dimensions: 766*465*958MM
- Drawer Sizes: Small drawer: 533*391*58MM Intermediate drawer: 533*391*128MM Large drawer: 533*391*195MM
- Wheel size: Φ 125MM 2 Fixed, 2 Castor (one with brake)

PRO LINE 150PCS TOOLS



GA Series

Economic



GA-29

GA-15

GA-07D

GA-18

NEW

GA-20E



DESIGNATION	SIZE(mm/in)		WEIGHT(KG)	CAPACITY OF CONTAINER					
GA-15	1320x458x2270	52"x18"x89.3"	97.4	20'FCL	26PCS	40'FCL	55PCS	40HQ	41PCS
GA-18	2135x458x2270	84"x18"x89.3"	143.4	20'FCL	18PCS	40'FCL	46PCS	40HQ	54PCS
GA-07D	1980x458x2270	78"x18"x89.3"	130.2	20'FCL	22PCS	40'FCL	46PCS	40HQ	54PCS
GA-20E	2795x458x2270	110"x18"x89.3"	209.2	20'FCL	16PCS	40'FCL	34PCS	40HQ	41PCS
GA-29	4270x458x2270	168"x18"x89.3"	280.6	20'FCL	9PCS	40'FCL	19PCS	40HQ	23PCS

GB Series

Professional



GB-29

GB-20

GB-15

GB-18

GB-19C



DESIGNATION	SIZE(mm/in)		WEIGHT(KG)	CAPACITY OF CONTAINER					
GB-18	2338x508x2396	92"x20"x94.3"	247.8	20'FCL	15PCS	40'FCL	30PCS	40HQ	36PCS
GB-15	1424x508x2396	56"x20"x94.3"	159.8	20'FCL	23PCS	40'FCL	48PCS	40HQ	54PCS
GB-19C	2136x508x2396	84"x20"x94.3"	303.2	20'FCL	11PCS	40'FCL	26PCS	40HQ	32PCS
GA-20	3050x508x2396	120"x20"x94.3"	303.2	20'FCL	11PCS	40'FCL	26PCS	40HQ	32PCS
GA-29	4672x508x2396	184"x20"x94.3"	586	20'FCL	4PCS	40'FCL	11PCS	40HQ	12PCS

GC Series Professional

NEW



GC-28

GC-01

GC-04



GC-02

GC-03



DESIGNATION	SIZE(mm/in)		WEIGHT(KG)	CAPACITY OF CONTAINER					
	20'FCL	40'FCL		20'FCL	40'FCL	40HQ	40HQ	40HQ	
GC-01	1980x508x2002	84"x20"x35"	158	20'FCL	26PCS	40'FCL	56PCS	40HQ	63PCS
GC-02	2640x508x2002	84"x20"x35"	193	20'FCL	15PCS	40'FCL	30PCS	40HQ	36PCS
GC-03	2640x508x2002	120"x20"x84"	193	20'FCL	15PCS	40'FCL	30PCS	40HQ	36PCS
GC-04	1980x508x2002	120"x20"x84"	124	20'FCL	41PCS	40'FCL	84PCS	40HQ	94PCS

Home Use Tool Set

JJ-BT26 Home Use Tool Set **26 pcs**

CTN SIZE(CM)	G.W/N.W(KG)	QTY/CTN	20'FCL	40'FCL
36x35x27	11.5/10.5	4	3280	6790



JJ-BT13B Home Use Tool Set **13 pcs**

CTN SIZE(CM)	G.W/N.W(KG)	QTY/CTN	20'FCL	40'FCL
36x35x27	12/11.6	4	3280	6790



JJ-BT48E Home Use Tool Set **48 pcs**

CTN SIZE(CM)	G.W/N.W(KG)	QTY/CTN	20'FCL	40'FCL
36x35x27	12/11.6	4	3280	6790



JJ-BT56C Home Use Tool Set **56 pcs**

CTN SIZE(CM)	G.W/N.W(KG)	QTY/CTN	20'FCL	40'FCL
36x35x27	13.6/13.2	4	3280	6790



JJ-BT78 Home Use Tool Set **78 pcs**

CTN SIZE(CM)	G.W/N.W(KG)	QTY/CTN	20'FCL	40'FCL
43x22x33	11.3/10.8	2	1800	3728



JJ-BT101 Home Use Tool Set **101 pcs**

CTN SIZE(CM)	G.W/N.W(KG)	QTY/CTN	20'FCL	40'FCL
39.5x22.5x28.5	11/10	2	2160	4500



Mechanical Tool Kit

GW-B4020-02 Socket Set **20 pcs**

CTN SIZE(CM)	G.W/N.W(KG)	QTY/CTN	20°FCL	40°FCL
42.5x37x28	20.4/19.4	6	3180	7902



GW-B4025-02 Socket Set **25 pcs**

CTN SIZE(CM)	G.W/N.W(KG)	QTY/CTN	20°FCL	40°FCL
42.5x37x28	22/21	6	3180	7902



GW-B5055-02 Mechanical Tool Kit **55 pcs**

CTN SIZE(CM)	G.W/N.W(KG)	QTY/CTN	20°FCL	40°FCL
48x22x35	14.4/13.4	2	1514	3138



GW-B5088M Mechanical Tool Kit **88 pcs**

CTN SIZE(CM)	G.W/N.W(KG)	QTY/CTN	20°FCL	40°FCL
47x22.5x34.5	15.6/14.6	2	1534	3178



GW-B5094M Socket Set **94 pcs**

CTN SIZE(CM)	G.W/N.W(KG)	QTY/CTN	20°FCL	40°FCL
43.5x33x33	20/19.5	3	1785	3690



GW-B5218M Socket Set **218 pcs**

CTN SIZE(CM)	G.W/N.W(KG)	QTY/CTN	20°FCL	40°FCL
49x21x40	21.9/21.4	2	1300	2800



Mechanical Tool Kit

JJ-MT51C Mechanical Tool Set **51 pcs**

CTN SIZE(CM)	G.W/N.W(KG)	QTY/CTN	20°FCL	40°FCL
39x22.5x28	10.5/9.5	2	2100	4400



JJ-MT81 Mechanical Tool Set **81 pcs**

CTN SIZE(CM)	G.W/N.W(KG)	QTY/CTN	20°FCL	40°FCL
50.5x24x24	12.5/11	1	960	2000



JJ-MT54 Mechanical Tool Set **54 pcs**

CTN SIZE(CM)	G.W/N.W(KG)	QTY/CTN	20°FCL	40°FCL
46x21x26.5	8.5/7.5	1	1120	2320



JJ-MT90 Mechanical Tool Set **90 pcs**

CTN SIZE(CM)	G.W/N.W(KG)	QTY/CTN	20°FCL	40°FCL
56x25x28	15/14.3	1	700	1470



JJ-MT109 Mechanical Tool Set **109 pcs**

CTN SIZE(CM)	G.W/N.W(KG)	QTY/CTN	20°FCL	40°FCL
45x27.5x33.5	19.3/18.3	2	700	1450



JJ-MT59B Mechanical Tool Set **59 pcs**

CTN SIZE(CM)	G.W/N.W(KG)	QTY/CTN	20°FCL	40°FCL
51x35x30.5	18.5/17.5	1	590	1200

